



# National Tower UK

127.45 metres (418.1 feet) tall, 14.6 m (47.9 ft) in diameter at the base and tapers to 8.5 m(27.9 ft) at the top

Studor believe that this is the tallest tower in the world that has undergone testing of a drainage system

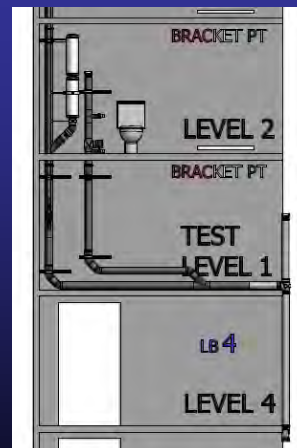
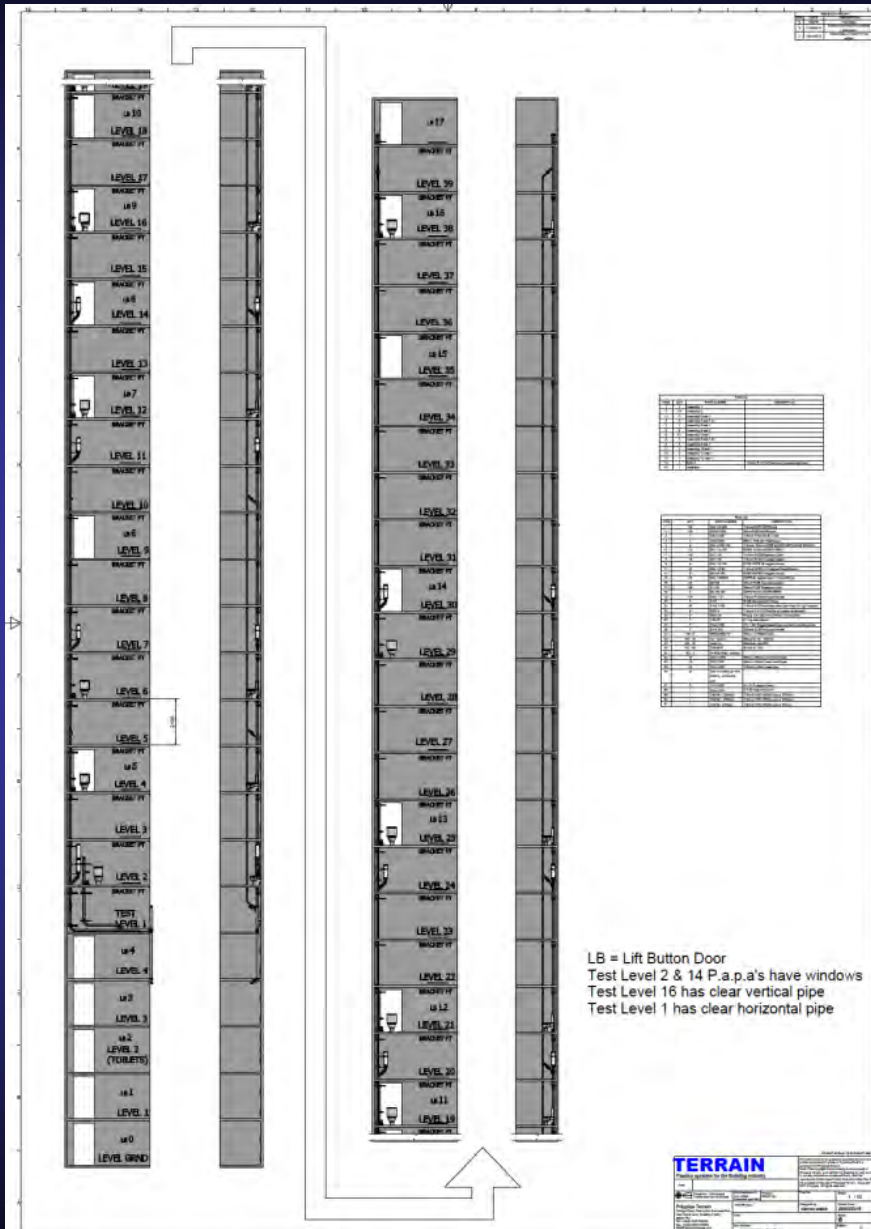




# STUDOR

Have installed the STUDOR SYSTEM onto the tower





- Studor have undertaken a system testing philosophy to try to reproduce a real drainage system in operation
- Testing has been undertaken with high water discharges over 3-5 locations with up to 60 litres discharged into the system in less than 15 seconds in a 100mm stack
- Testing has been undertaken with solids, wet wipes and sanitary towels
- To measure the response of the system, manometers and Pressure- TEQ as well as video have been used to collect the data.



File Database Report

Generate Select Fit to View Box Zoom Horizontal Zoom Vertical Zoom Set Scale Lock Vertical Scale Enable Autoscroll Axis Positions Timeslice Cooling Flags Line Thickness No w... Line Color Background Color

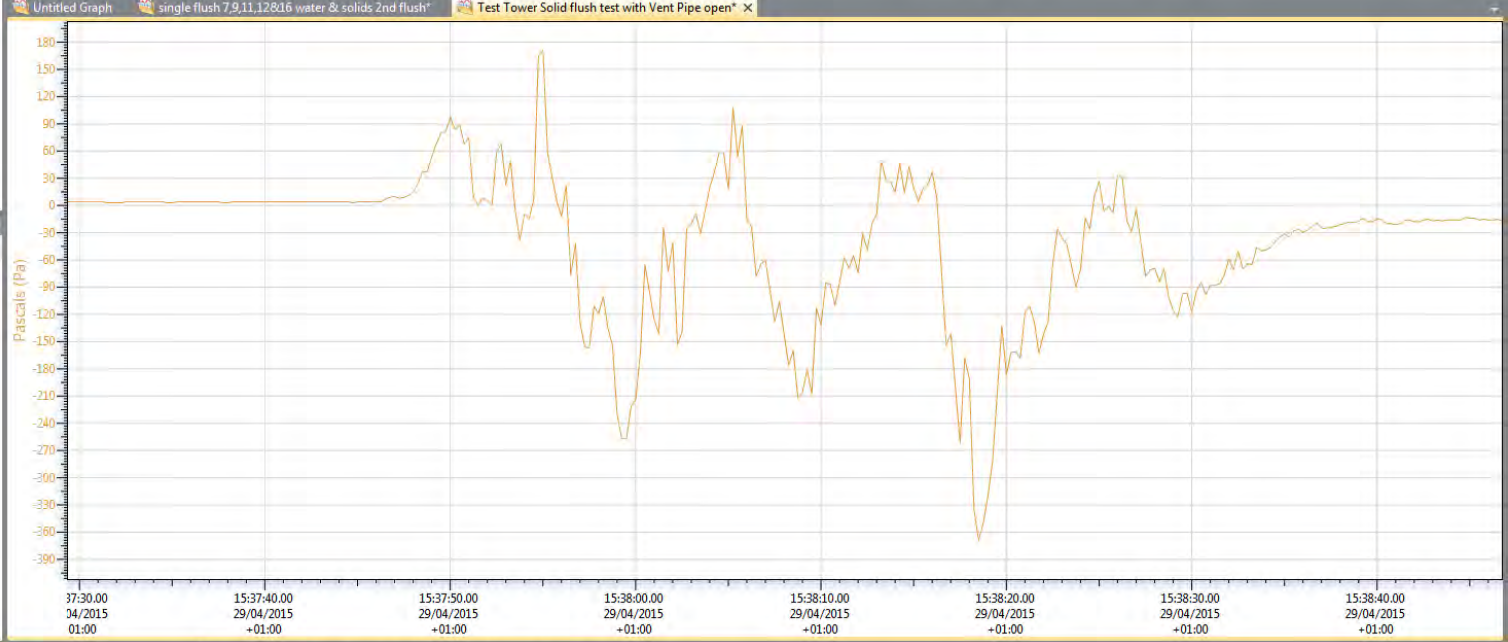
Generate Generate Add/Remove Device Properties Math Channels Remove Channel Unit: Channel Grouping Report Properties Export To Excel Report Options

- File Database
- Test Tower Day 2
- Datasets
    - Deleted Datasets
    - Example Datasets
    - Reports
    - Deleted Reports
    - Test Tower Day 2**
    - Test Tower Day 3
    - New Folder

Search Search by: No preference

Title	Comment	Created	Updated	Last Modified By	Created By	Channels	Type
Test Tower Flush EL16 & EL9 Clea		29/04/2015 12:20:23	05/05/2015 13:35:21	%tony	%Tony	1	Graph
Test Tower Day 2 PM solids and system limit test. Test 9-13 plus system break		29/04/2015 13:57:02	05/05/2015 13:09:54	%tony	%Tony	1	Graph
<b>Test Tower Solid flush test with Vent Pipe open</b>		<b>29/04/2015 15:43:38</b>	<b>12/05/2015 10:50:32</b>	<b>%Tony</b>	<b>%Tony</b>	<b>1</b>	<b>Graph</b>
Day 3, multi flush 16,12,11&9 3 flushes per pan monitor bath trap on 7		30/04/2015 10:08:54	05/05/2015 13:33:32	%tony	%Tony	1	Graph
Test Tower PAPA & AAV Flush 7,9,11,12&16 3 per WC		30/04/2015 12:59:15	13/05/2015 13:03:37	%Tony	%Tony	1	Graph
single flush 7,9,11,12&16 water & solids 2nd flush		30/04/2015 13:34:24	05/05/2015 13:34:11	%tony	%Tony	1	Graph

- Channels
- P47705
  - Voltage



0 Notifications

Successfully loaded "Test Tower Solid flush test with Vent Pipe open"

13/05/2015 13:04:50

Start

13:04 13/05/2015

File Database | Test Tower Day 2

File | Device | Report

Generate | Select | Fit to View | Horizontal Zoom | Vertical Zoom | Set Scale | Lock Vertical Scale | Enable Autoscroll | Axis Positions | Timeslice | Cooling Flags | Line Thickness | Line Color | Background Color

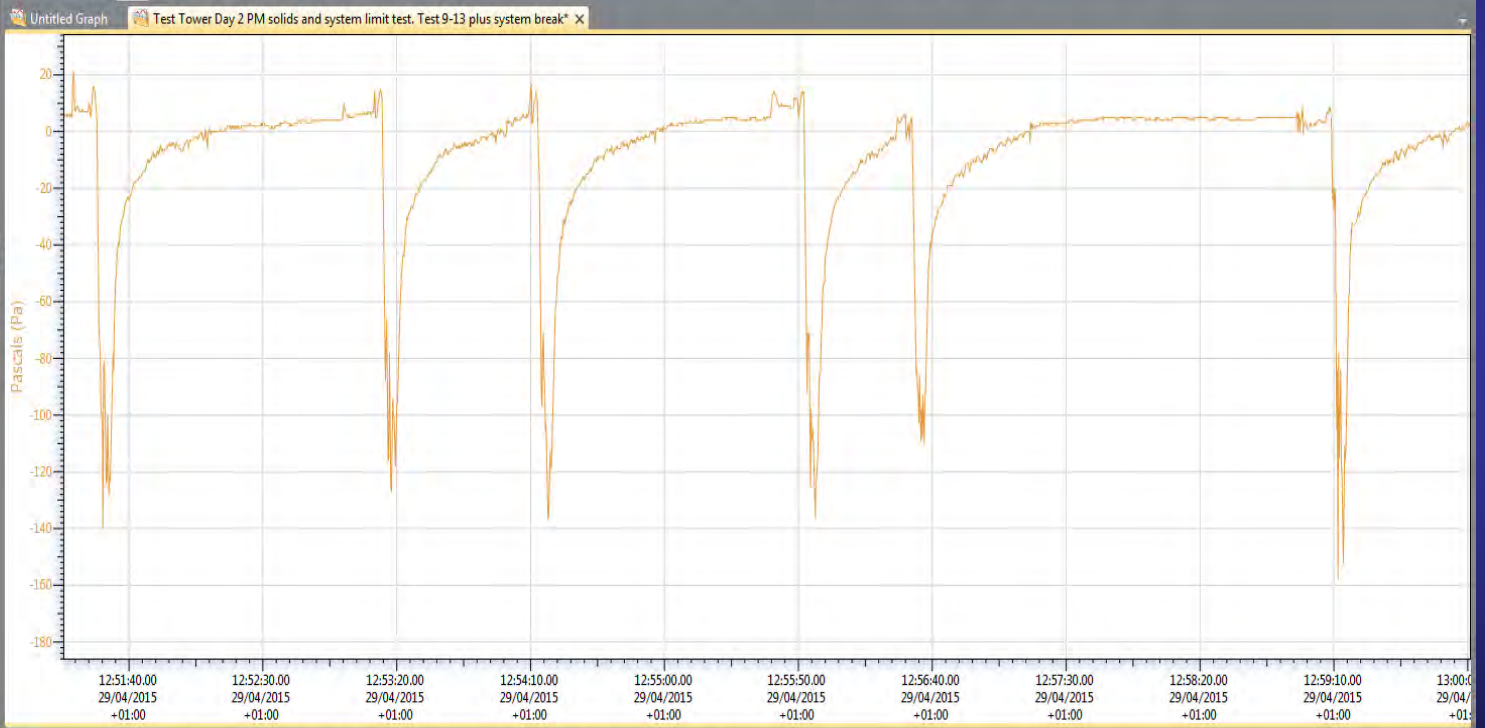
Generate | Generate | Add/Remove | Device Properties | Math Channels | Remove Channel | Channel Grouping | Add Annotation | Unit | Report Properties | Export To Excel

- File Database
- Deleted Datasets
  - Example Datasets
  - Reports
    - Deleted Reports
    - Test Tower Day 2**
    - Test Tower Day 3
    - New Folder

Search: Search by: No preference

Title	Comment	Created	Updated	Last Modified By	Created By	Channels	Type
Test Tower Flush EL16 & EL9 Clea		29/04/2015 12:20:23	13/05/2015 13:06:57	%Tony	%Tony	1	Graph
<b>Test Tower Day 2 PM solids and system limit test. Test 9-13 plus system break</b>		29/04/2015 13:57:02	05/05/2015 13:09:54	%Tony	%Tony	1	Graph
Test Tower Solid flush test with Vent Pipe open		29/04/2015 15:43:38	13/05/2015 13:04:43	%Tony	%Tony	1	Graph
Day 3, multi flush 16,12,11&9 3 flushes per pan monitor bath trap on 7		30/04/2015 10:08:54	05/05/2015 13:33:32	%Tony	%Tony	1	Graph
Test Tower PAPA & AAV Flush 7,9,11,12&16 3 per WC		30/04/2015 12:59:15	13/05/2015 13:06:28	%Tony	%Tony	1	Graph
single flush 7,9,11,12&16 water & solids 2nd flush		30/04/2015 13:34:24	13/05/2015 13:04:07	%Tony	%Tony	1	Graph

- Channels
- P47705
  - Voltage



0 Notifications | Successfully loaded "Test Tower Day 2 PM solids and system limit test. Test 9-13 plus system break" | 13/05/2015 13:09:18

Windows taskbar showing Start button, application icons (Internet Explorer, Chrome, etc.), and system tray with date and time (13/05/2015 13:09).

- Thank you!

